



biEMS

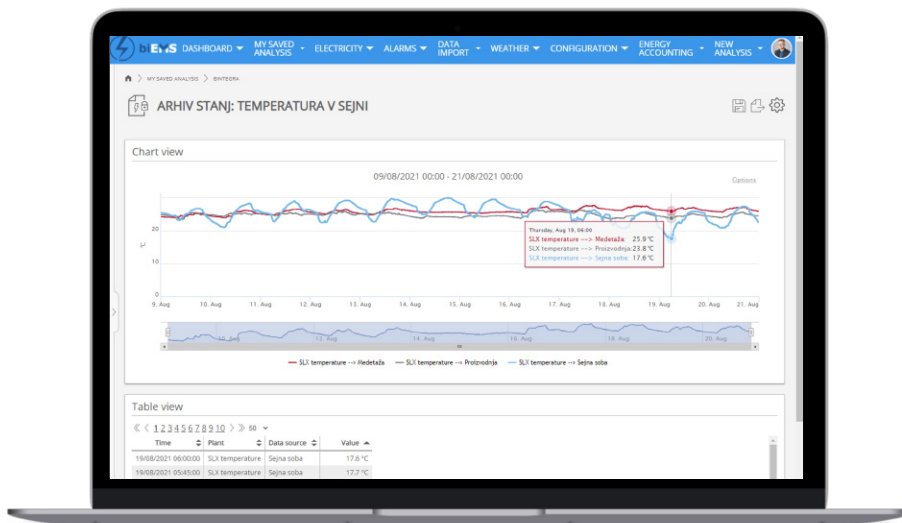
Smart energy consumption

bintegra»

REAL-TIME ENERGY MONITORING - MAKE ENERGY USAGE VISIBLE

We make energy usage visible and easy to follow. Please see some useful cases from real life below!

CASE 1 - Temperature measurement in the »meeting room« and low temperature case



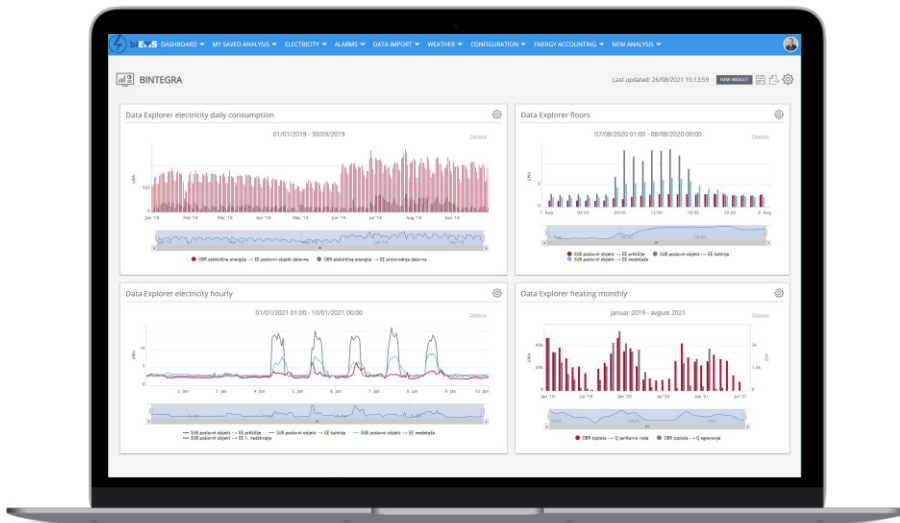
On August 19, 2021, the temperature in the meeting room was very low, only 17 Celsius and extremely stands out on the curve. We can conclude someone has manually changed the temperature of the air conditioner and over-cooled the room at night.

CASE 2 - Outline display – Comparison of two tables



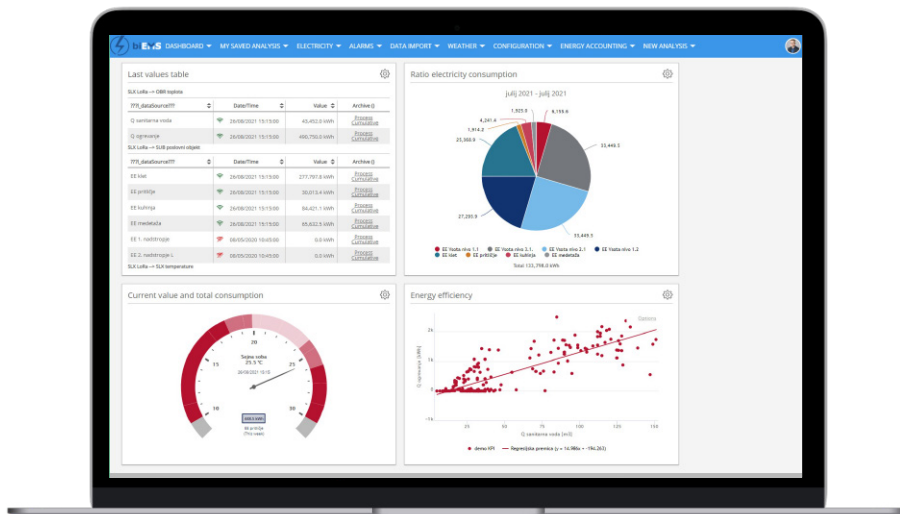
Table above: An example of electricity consumption in an office building. The red coloured parts of the table show that the energy consumption in this building is not completely regulated. The owner of the building should review and check the schedule in the building to understand and justify the higher energy consumption on some days, especially in the evening and at night. We would recommend reducing the energy consumption with appropriate adjustments (shutdowns, automation, innovative solutions).

CASE 3 - Overview panel with energy consumption data



Four different diagrams show hourly, daily, and monthly data on electricity and heat consumption.

CASE 4 - Transparent panel with data on energy consumption



Easy everyday data observation and an example of meaningfulness of using advanced energy monitoring platforms, like biEMS.

If you would like to learn more about the efficient and environmentally friendly biEMS platform, contact us for:

ONE ON ONE
COUNSELLING ✓

TUTORIAL ✓

CHAT WITH
THE PROFESSIONAL ✓
- ENERGY MANAGER

Contact: **info@bintegra.com**

Thank you for your inquiry!

bintegra»

Bintegra is a provider of consulting services and IT solutions for enterprises in the energy, communications and other service industries. Bintegra primarily focuses on business integration solutions based on SOA, which help enterprises to connect their business processes, applications and data in order to increase operational efficiency & IT flexibility, improve customer service and shorten time to market. For more information about Bintegra please visit **www.bintegra.com**

Contact:



info@bintegra.com



+386 (0) 2 620 4861 /2



+386 (0) 2 620 4863

Main office:



Železnikova 4

2000 Maribor

Slovenia

Ljubljana office:



Stegne 23A

1000 Ljubljana

Slovenia